

An overview of

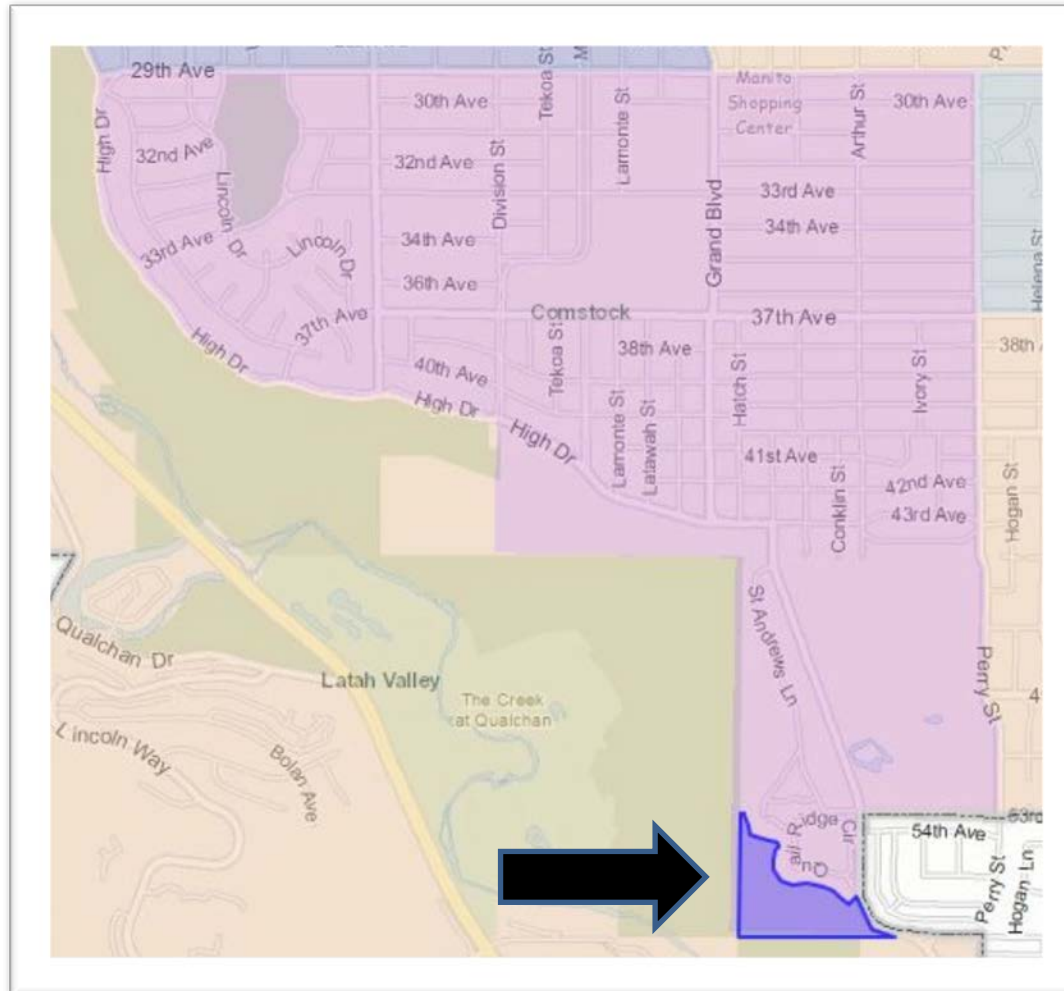
The Tuscan Ridge Conservation Futures Application

Prepared by
Friends of the Bluff

The Tuscan Ridge property shown within Spokane City Limits



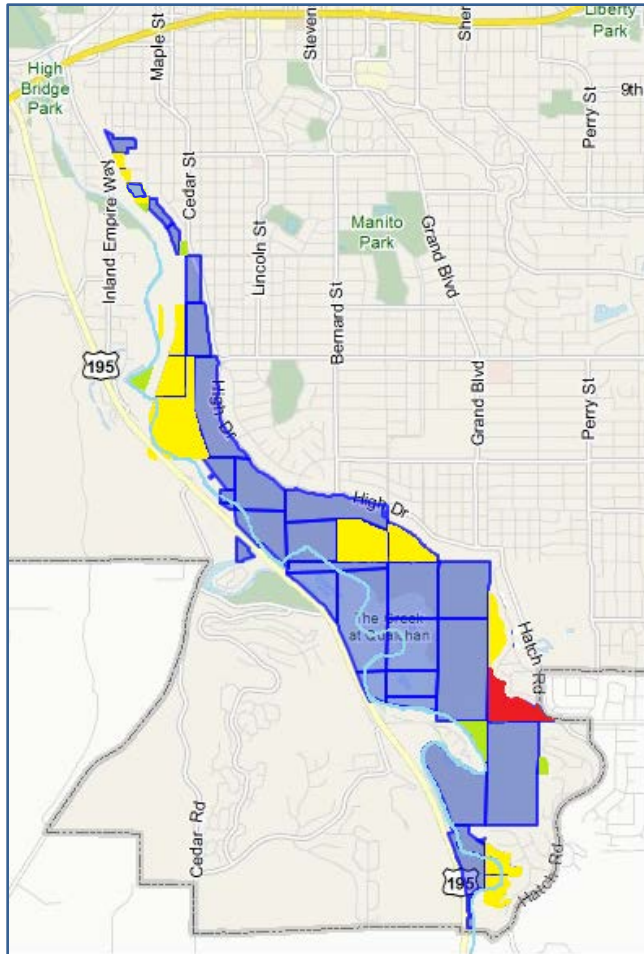
The Tuscan Ridge property shown within the Comstock neighborhood



The Tuscan Ridge property shown (in red) in relation to Hangman Park

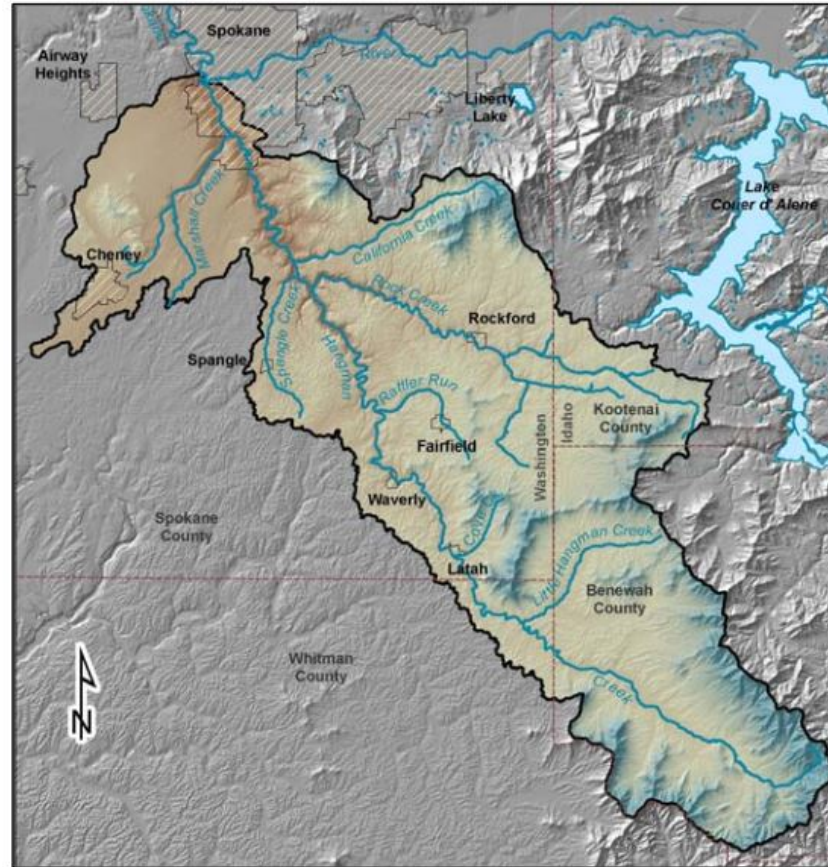


Tuscan Ridge situated among other City & private properties along the Bluff south of Polly Judd Park



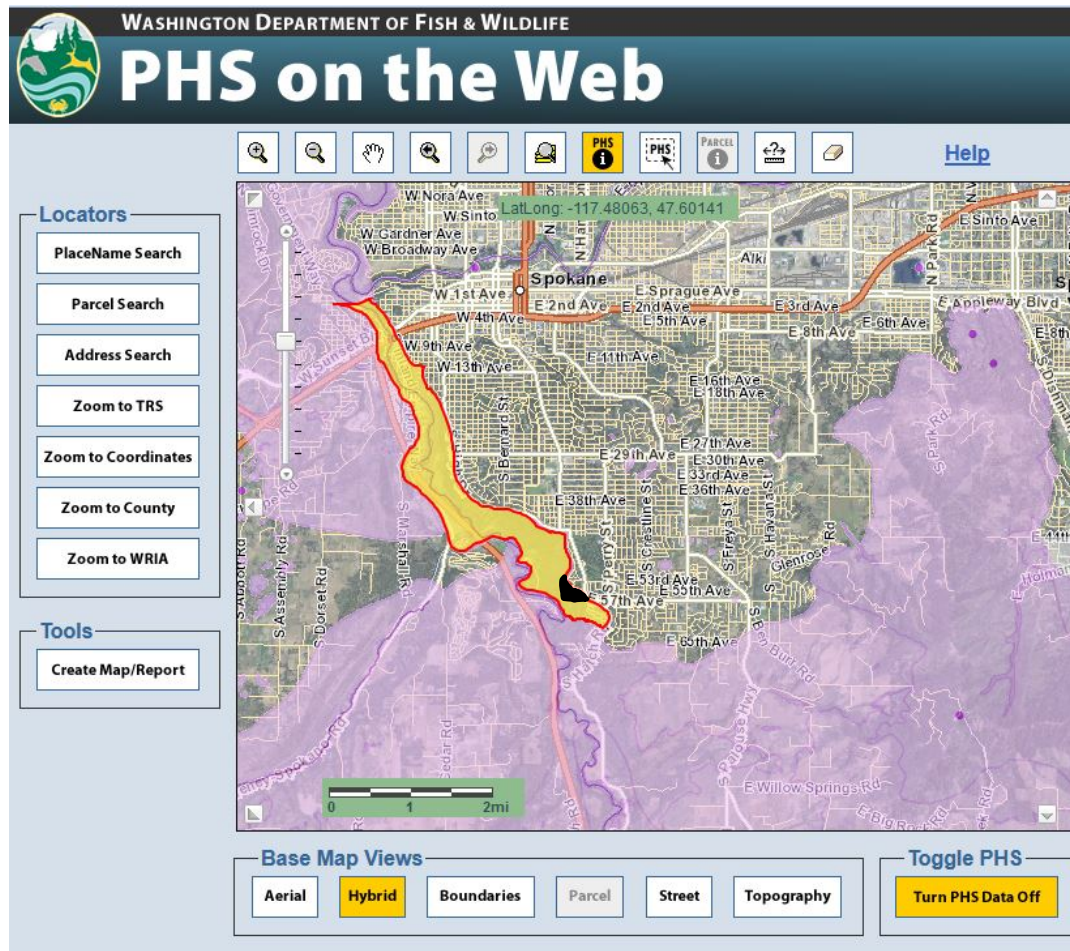
- Tuscan Ridge shown in **RED**
- Other private properties shown in **YELLOW**
- City land not labeled as Park, Conservation Land, Conservation Futures Land or The Creek at Qualchan on the City GIS map is **LIGHT GREEN**

The Tuscan Ridge property is at the terminus of the Hangman Creek watershed

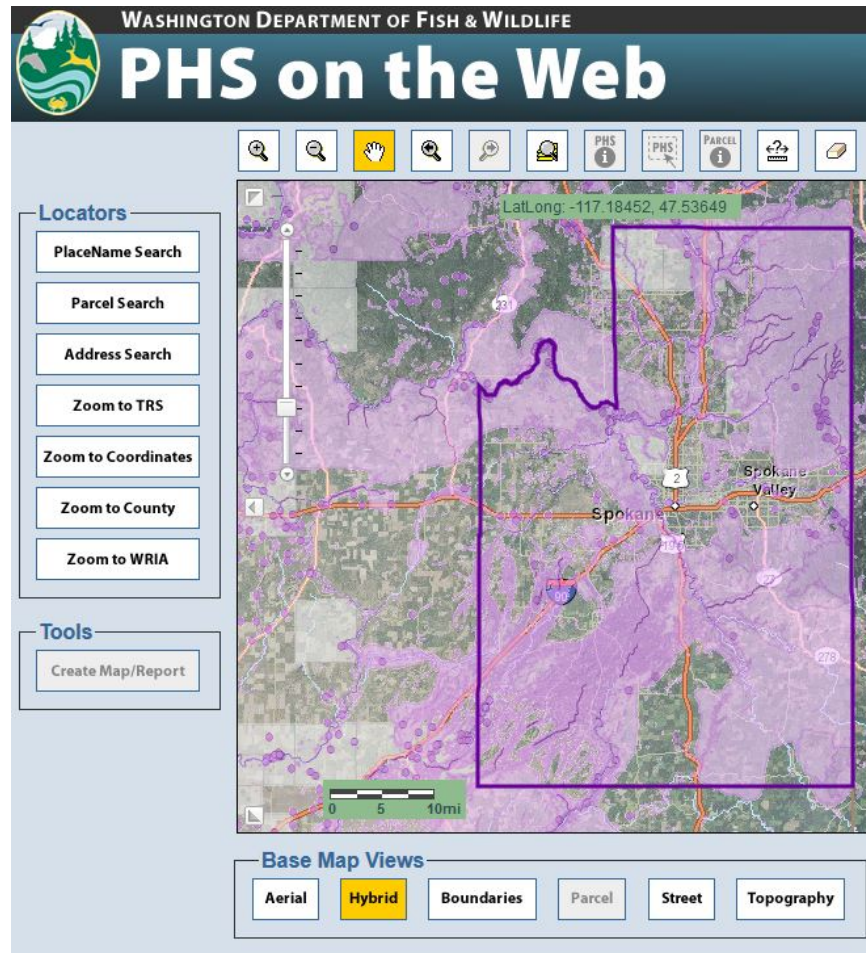


WDFW PHS Region

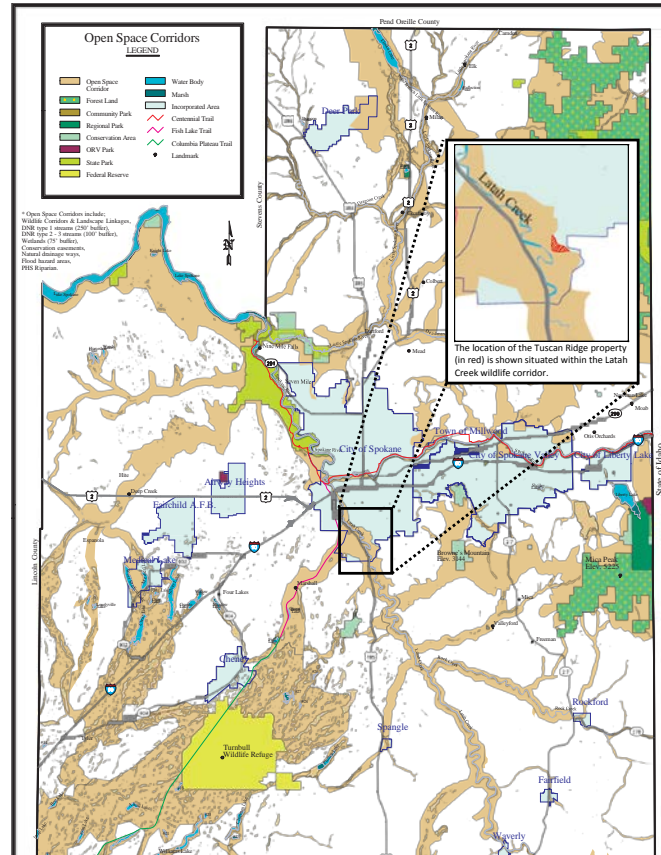
Lower Hangman Creek



PHS Regions in Spokane County

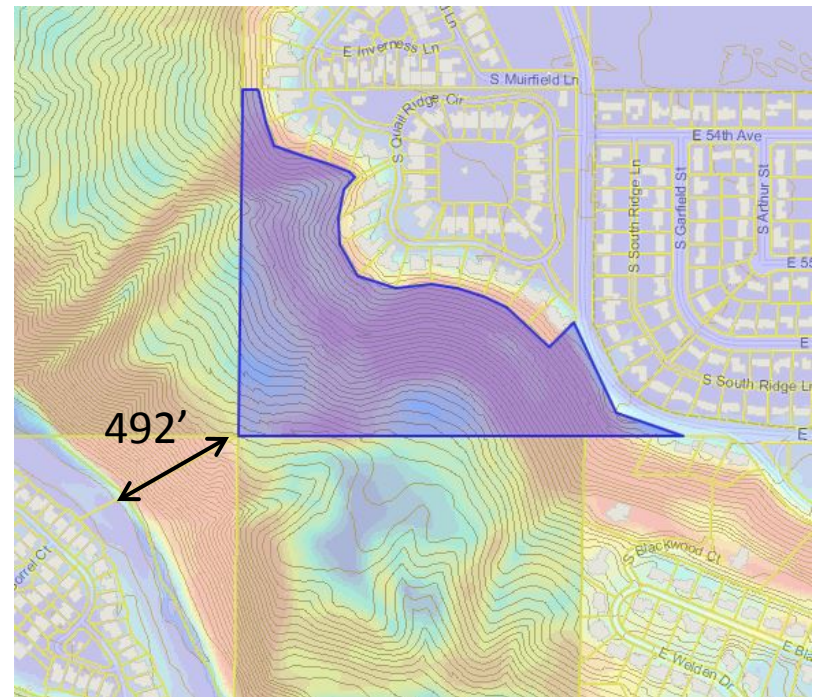


Spokane County Open Space Corridor map showing location of Tuscan Ridge

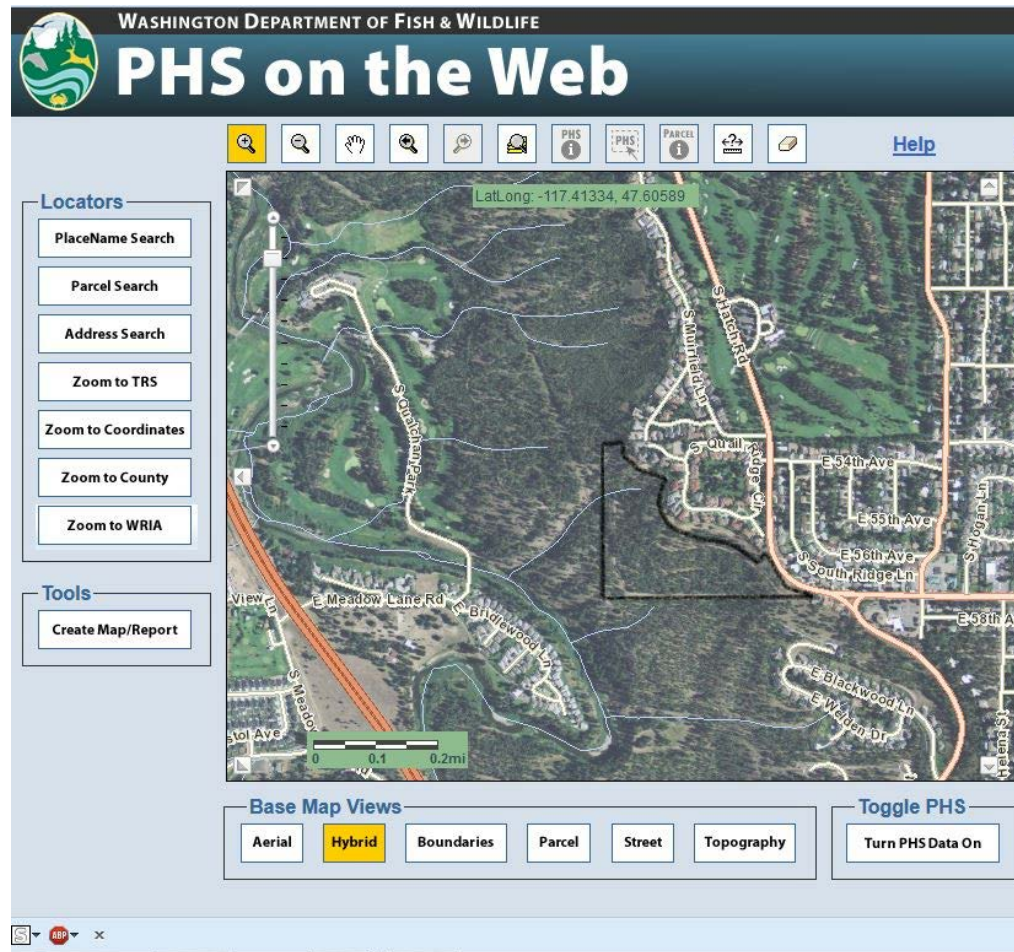


Tuscan Ridge slope gradient map with contour lines

- Development would force wildlife into the narrow, steep remaining fragment of the wildlife corridor.
- Edge of property is 492' from Hangman Creek
- The property forms an important buffer between the City and the riparian habitat below



WDFW PHS map showing seasonal stream on Tuscan Ridge property



This photo shows the scenic view of the Hangman Creek valley from Tuscan Ridge, and the forest canopy diversity on the property.



Most of the Tuscan Ridge property is a healthy Ponderosa-Bunchgrass ecosystem on very steep land.



An intermittent, seasonal stream is shown in this ravine on WDFW maps. The moisture and the ravine's aspect create a richly shrubby habitat. Wildlife trails run to Hangman Creek below through this ravine and from the south edge of the property.



The many hiking trails on the property connect the two, discontinuous sections of Hangman Park.



With a large, dirt parking lot, Tuscan Ridge allows large groups to gather on The Bluff for educational outings.

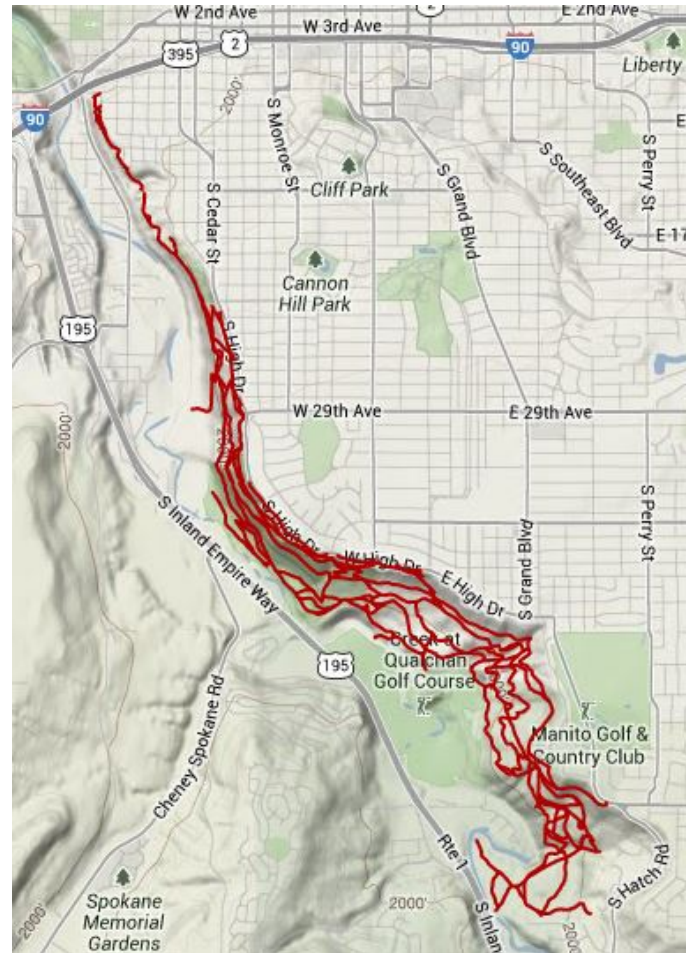
Local author and naturalist, Jack Nisbet, talks to a group at Tuscan Ridge about fire ecology in Ponderosa Pine forests.



DNR Forester, Guy Gifford, counts the tree rings on a core sample taken from a 330+ year old Ponderosa Pine at Tuscan Ridge, during his lecture on forest health.



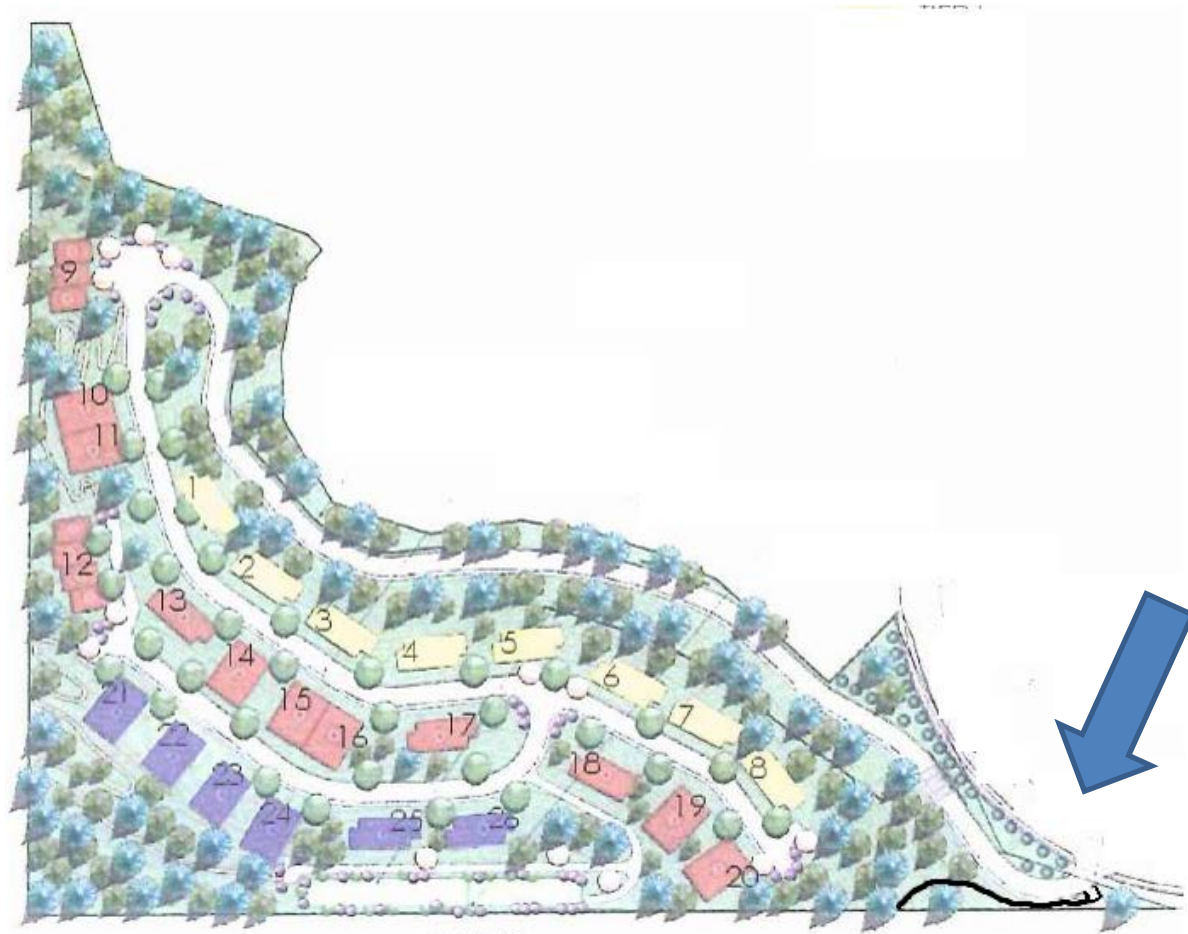
The High Drive Bluff trail system – 27 + miles of trails



1.4 miles of trails lie within the Tuscan Ridge property

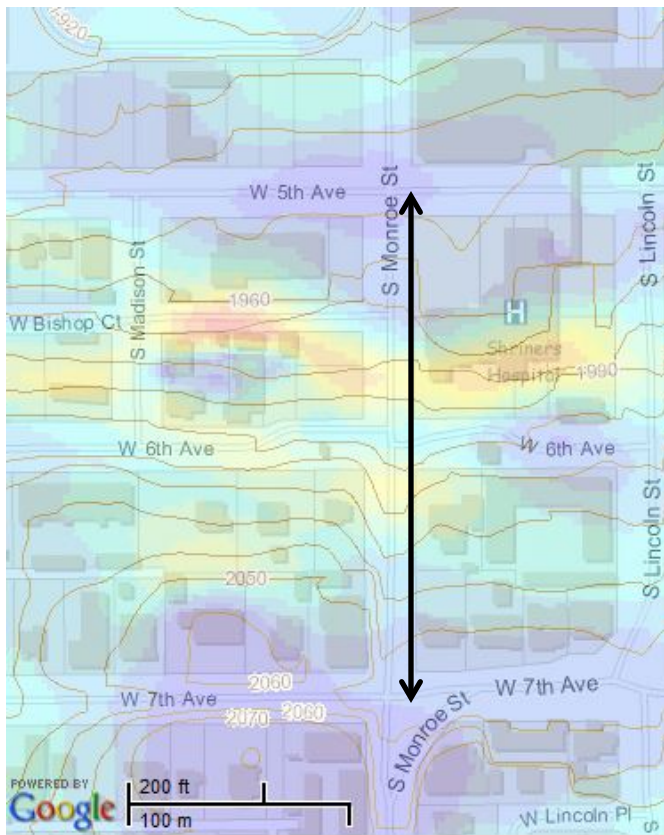


The trail access path as shown on the Tuscan Ridge development map



Slope of Monroe Street hill vs. the Tuscan Ridge trail access path

Monroe Street between 5th Avenue & 7th Avenue rises 100' over 765'.



The Tuscan Ridge trail access path is over twice as steep. It rises, on average, 100' over 326'. (Black is the trail access path; red is the closest existing Hangman Park trail.)



The trail access path at Tuscan Ridge

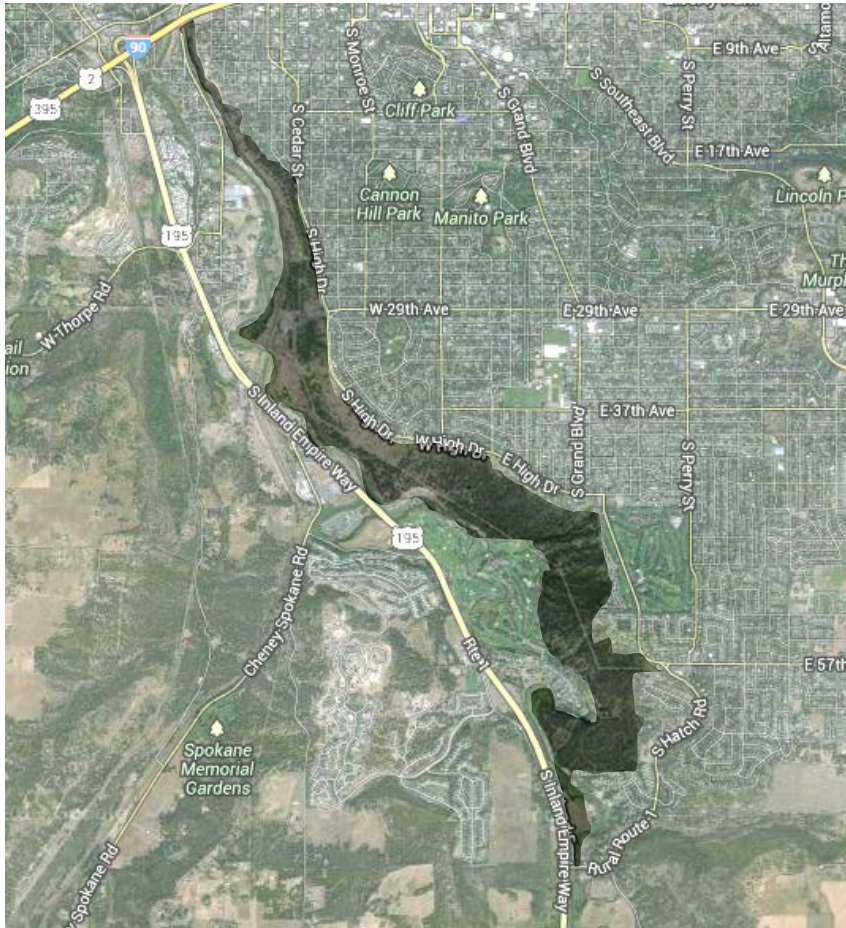
**Looking down to the trails below
from near the end of the proposed
Tuscan Ridge trail access path**



**Looking up the slope where a
connecting trail will need to be built**

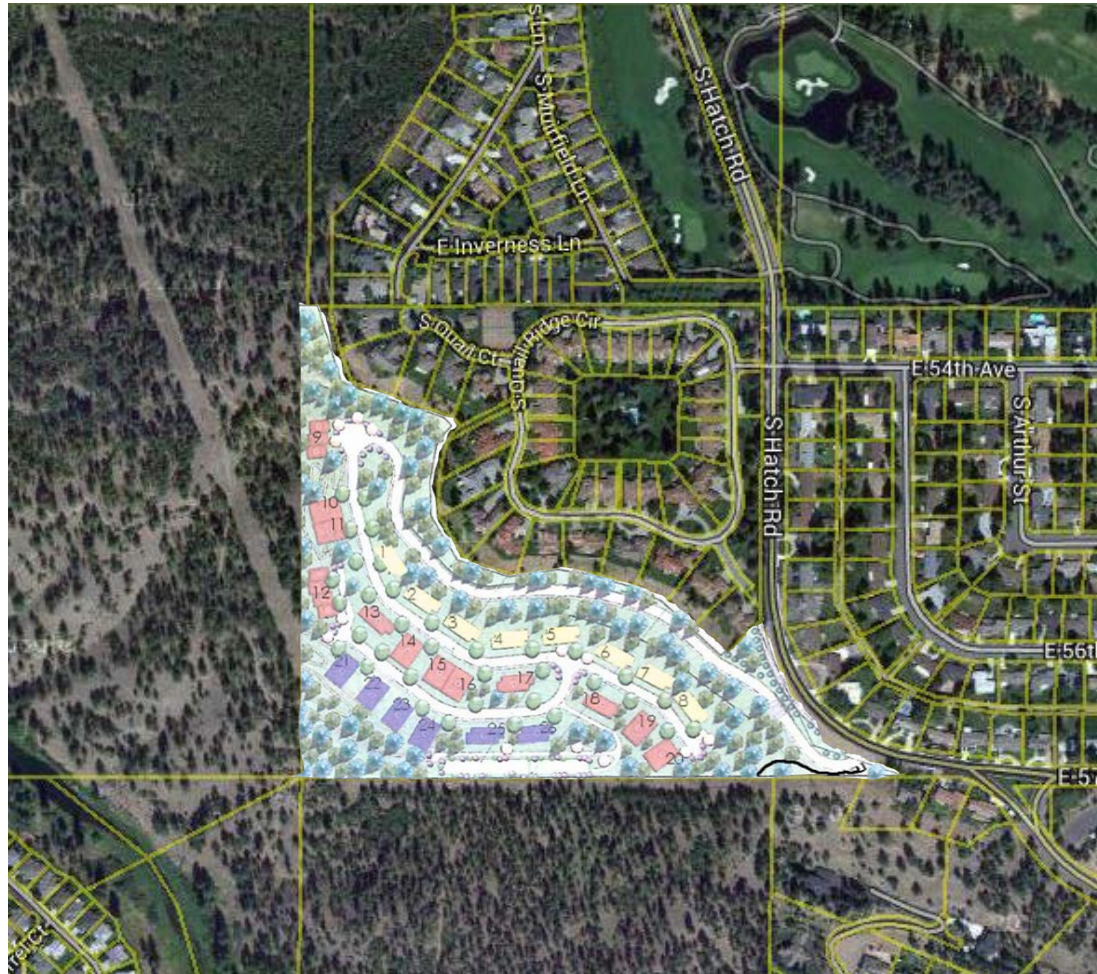


Our goal is to steward “The Bluff” and to conserve the area in a natural state.



- ***The mission of the Friends of the Bluff is to steward the High Drive Bluff through volunteer efforts, community partnerships, and education. We conserve the area in a natural, sustainable state for multiple users who respect the resource, each other, and wildlife.***

We are not opposing the Tuscan Ridge development per se.
If built, it will benefit the City with new, beautiful, and unique housing.



We feel the land would benefit the City more as part of an integrated open space system of Park Conservation Land. We are advocating to preserve Tuscan Ridge in perpetuity for recreational use and as a wildlife corridor.



We feel the land would benefit the City more as part of an integrated open space system of Park Conservation Land. We are advocating to preserve Tuscan Ridge in perpetuity for recreational use and as a wildlife corridor.

